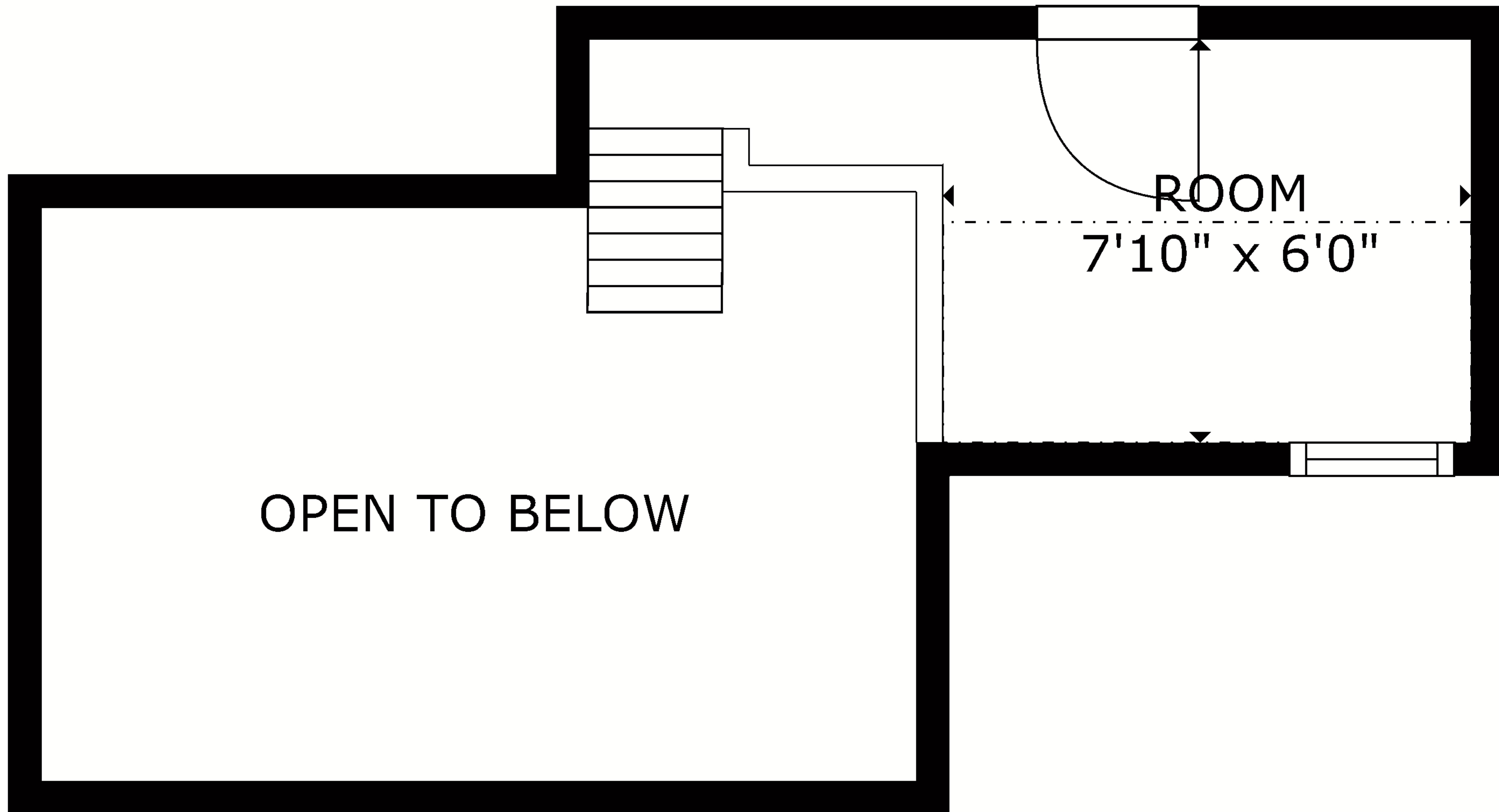


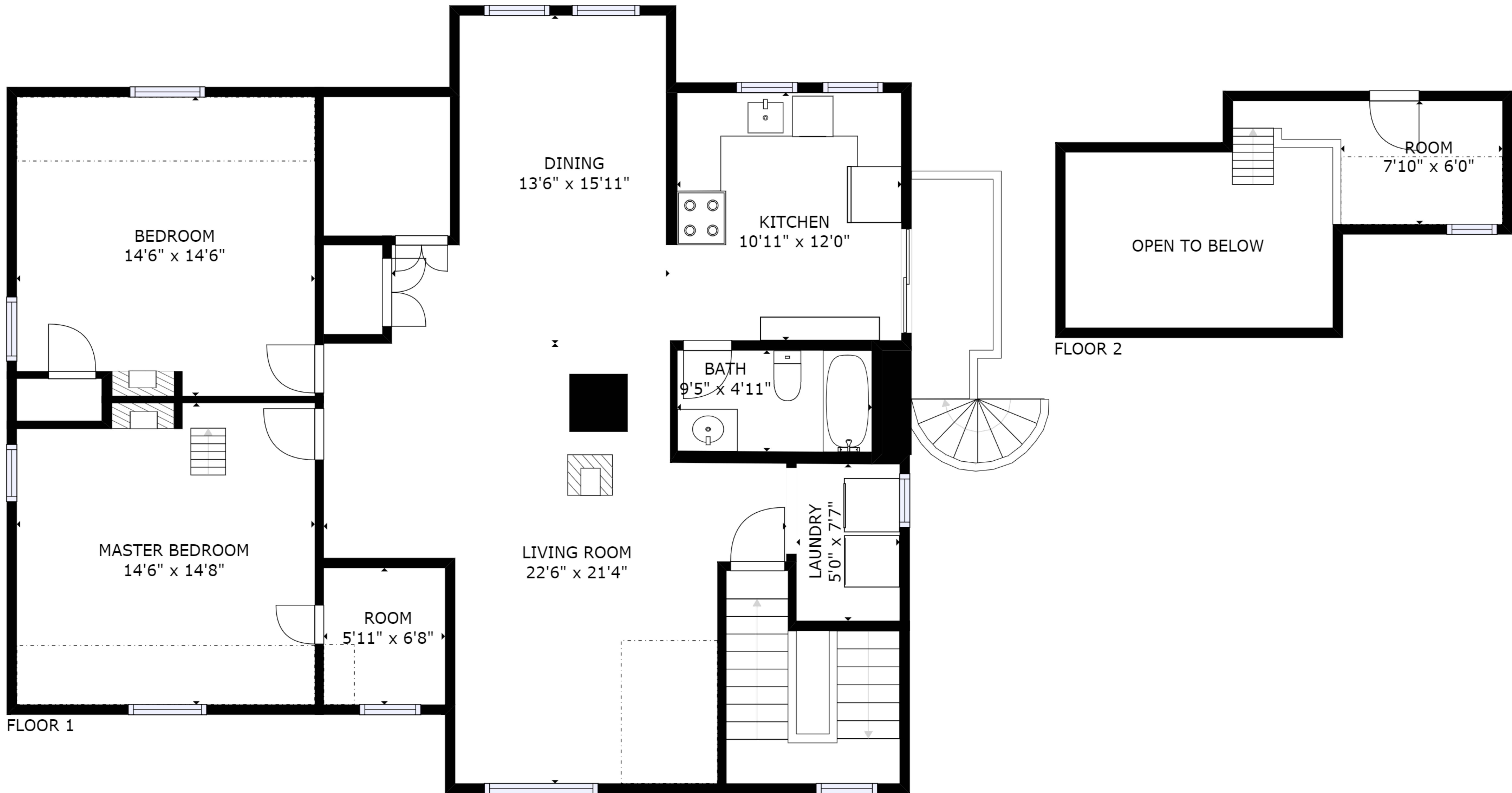
GROSS INTERNAL AREA  
 FLOOR 1: 1251 sq ft, FLOOR 2: 38 sq ft  
 EXCLUDED AREAS: , REDUCED HEADROOM BELOW 1.5M: 149 sq ft  
 TOTAL: 1289 sq ft



OPEN TO BELOW

ROOM  
 $7'10'' \times 6'0''$

GROSS INTERNAL AREA  
FLOOR 1: 1251 sq ft, FLOOR 2: 38 sq ft  
EXCLUDED AREAS: , REDUCED HEADROOM BELOW 1.5M: 149 sq ft  
TOTAL: 1289 sq ft



GROSS INTERNAL AREA  
 FLOOR 1: 1251 sq ft, FLOOR 2: 38 sq ft  
 EXCLUDED AREAS: , REDUCED HEADROOM BELOW 1.5M: 149 sq ft  
 TOTAL: 1289 sq ft  
 SIZES AND DIMENSIONS ARE APPROXIMATE, ACTUAL MAY VARY.